



## **Brock University Graduate Students' Association**

### **Document 034A**

#### **The Graduate Students' Association Organizational Chart Policy**

#### **Name:**

1. This Document shall be known as the "Organizational Chart Policy"

#### **Purpose:**

2. This document is intended to provide Members of the Board of Directors, Executive Committee, Association Staff as well as the GSA's broader membership with a clear understanding of the structure of the Graduate Students' Association.

#### **Limitations:**

3. As a policy of the Board of Directors this document is approved and upheld by the board, though it reflects several management or operational level components that are deemed to be beyond the scope of the Board's functioning, as determined by Document 037 – Graduate Students' Association Operational Oversight Policy.
4. As per Document 030 – Graduate Students' Association Executive Director Policy, the ED shall be the only employee of the Board of Directors and is responsible for all operational aspects of the organization.
5. Specifically, the Board of Directors shall have the authority to adjust the structure/compliment of the GSA's Executive Committee, as well as that of the Board of Directors (both pending additional approval from the membership through a Referenda or General Meeting) but they shall not have authority over the structure/compliment of operational staff that report to the Executive Director. While the ED has an obligation to consult the Board on any proposed changes or adjustments to the operational organizational structure, decisions of this nature remain their discretion.
6. Any structural changes that should impact the organizational design of the GSA shall be reflected in this document, specifically within the Organizational Chart.
7. Owing to the frequency of turnover within a number of the roles within the GSA, this document shall only reflect the position titles and not the names of the individual office holders.

#### **Organizational Chart:**

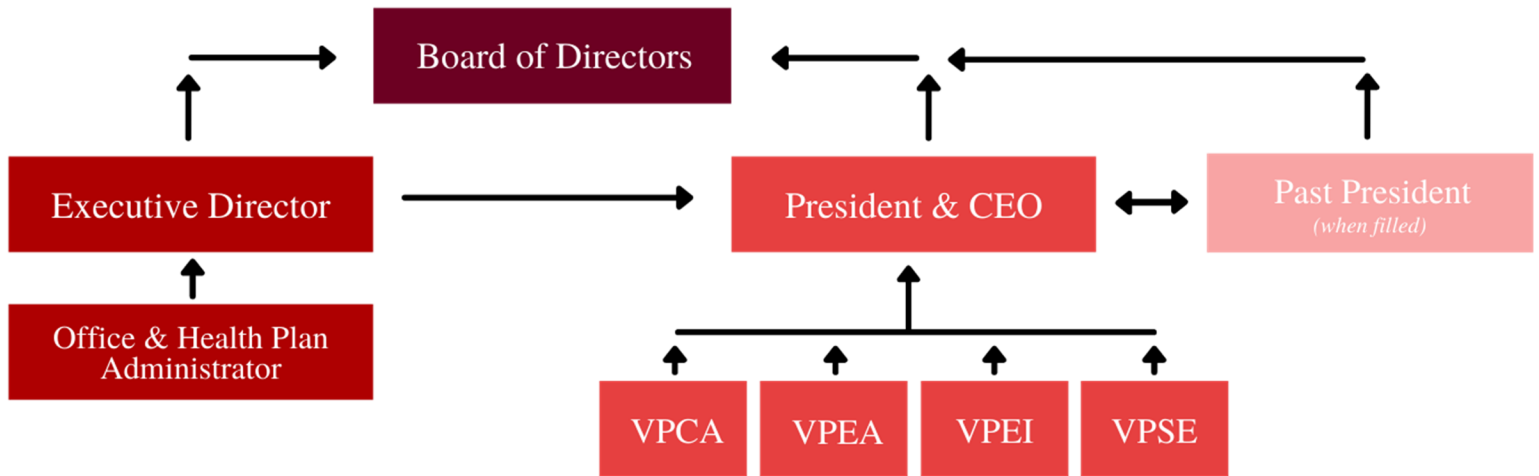
8. Please see the following page for the most up-to-date organizational chart of the GSA.



# Brock University Graduate Students' Association

Document 034A

The Graduate Students' Association Organizational Chart Policy



Enacted: March 2022

Last Review: February 2022

Next Review: January 2026